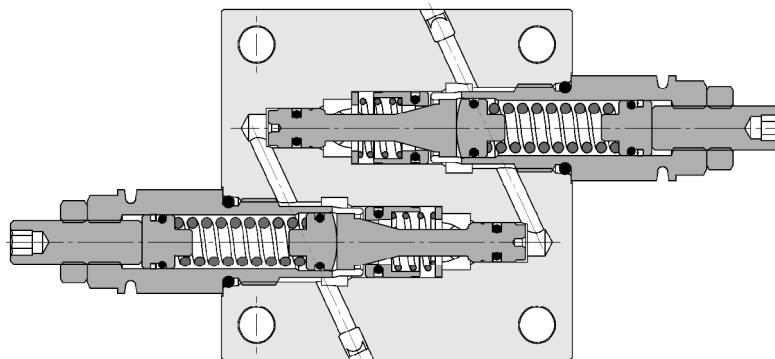
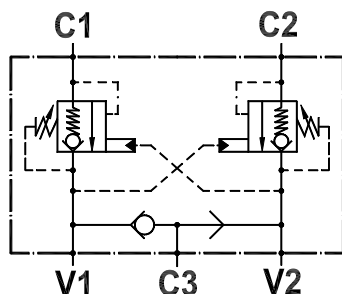




Valvola overcenter doppia incrociata, flangiabile su motori Danfoss serie "OMP/R/H-OMS", con sblocco freno e valvola antiurto opzionale
Dual overcenter valve, flangeable on Danfoss motors "OMP/R/H-OMS" series, brake release port, optional anti-shock valve

Rev.07-2022/07



SPECIFICHE TECNICHE

Materiali: cartucce in acciaio zincato, parti interne in acciaio trattato termicamente. Corpo in lega di alluminio (o acciaio su richiesta).

Portata max.: 50 l/min

Taratura max.: 350 bar

Pressione max: 250 bar (std) 350 bar (ver.S)

Rapporto di pilotaggio: 1 : 4.25 standard, a richiesta 1 : 8, 1 : 11

Regolazione pressione: mediante vite

Campo di regolazione pressione: vedere pag. 02

Peso: 1,650 Kg (std) - 3.400 Kg (ver.S)

Peso con valvola antiurto: 2,300 Kg (std) - 4.850 Kg (ver.S)

TECHNICAL SPECIFICATIONS

Materials: cartridges in steel zinc plated, internal parts in hardened steel. Body is in high strength aluminium alloy (or steel on request).

Rated flow: up to 50 l/min

Max. setting: 350 bar

Max. pressure: 250 bar (std) - 350 bar (ver.S)

Pilot ratio: 1 : 4.25 std, 1 : 8 and 1 : 11 on request

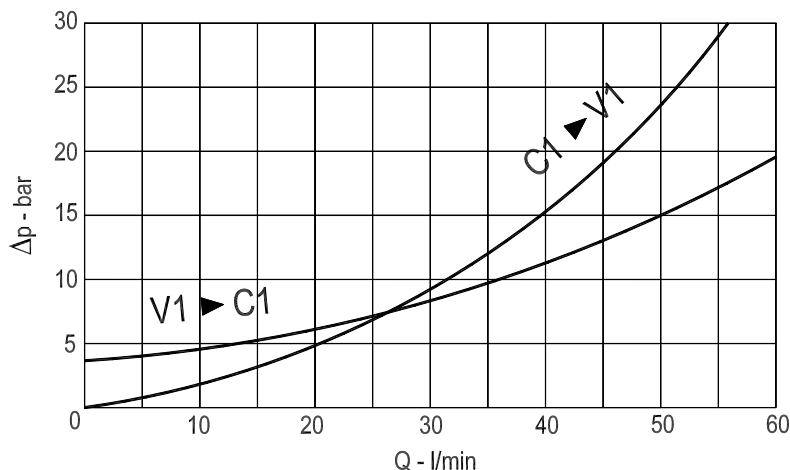
Adjustment means: leakproof screw adjustment

Adjustable pressure range: see page 02

Weight: 1,650 Kg (std) - 3.400 Kg (ver.S)

Weight with anti-shock valve: 2,650 Kg (std) - 4.850 Kg (ver.S)

DIAGRAMMA PERDITE DI CARICO PRESSURE DROP CURVES

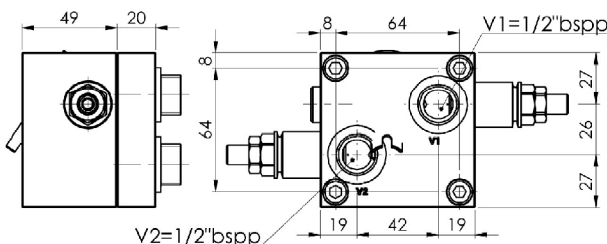
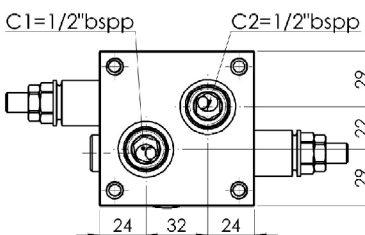
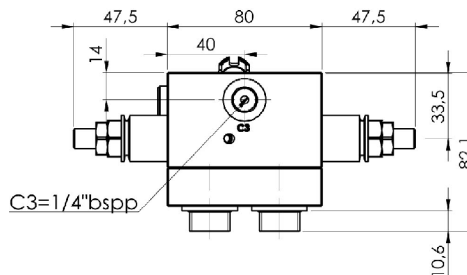
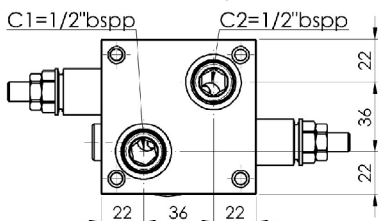




Valvola overcenter doppia incrociata, flangiabile su motori Danfoss serie "OMP/R/H-OMS", con sblocco freno e valvola antiurto opzionale
Dual overcenter valve, flangeable on Danfoss motors "OMP/R/H-OMS" series, brake release port, optional anti-shock valve

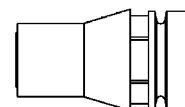
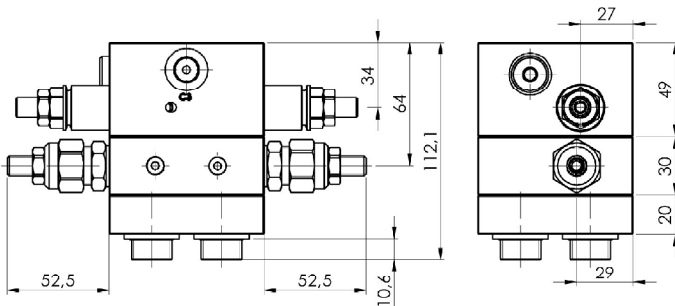
Rev.07-2022/07

Versione - version D2 (Danfoss OMP/R/H)



Versione - version D3 (Danfoss OMS)

Versione con valvole antiurto - version with anti-shock valves



Cappello anti-manomissione.
Codice di ordinazione: 9006800010

Tamperproof cap.
Ordering code: 9006800010

MOLLE - SPRINGS				*
Codice Code	Rapp. pil. Pilot ratio	Campo taratura min.-max. bar Adjustable pressure range bar	Increment. press. bar/ giro vite Pressure increase bar/turn	Taratura standard bar Standard setting bar
20	1 : 4.25	60 - 210	42	170
	1 : 8	60 - 220	50	
	1 : 11	60 - 250	70	
35	1 : 4.25	80 - 350	107	280
	1 : 8	100 - 350	78	
	1 : 11	80 - 350	109	

ESEMPIO DI ORDINAZIONE - ORDERING CODE EXAMPLE

F P O 5 0 D V D 2 1 / 2 U S 2 0 B V M 0 5 *

D2 = per motori Danfoss OMP/R/H
 D2 = for OMP/R/H Danfoss motors
 * D3 = per motori Danfoss OMS
 D3 = for OMS Danfoss motors

* Mat. corpo: omettere se alluminio, S=acciaio
 Body material: omit if aluminium, S=steel

* 20+/35±
 Campi di taratura pressione - Adjustable pressure range

Rapporto di pilotaggio . Pilot ratio
 * Omettere se standard - Omit if standard
 B = 1 : 8, C = 1 : 11

Guarnizioni:
 Seals:
 V=Viton *
 Omettere se BUNA-N
 Omit if BUNA-N

Valvola di max. omettere se non richiesta
 Relief valve, Omit if not requested
 Campi di taratura pressione disponibili
 Available pressure range
 * 20± 5. 50 bar . 30± 30. 100 bar
 35± 50. 220 bar . 85± 80. 350 bar