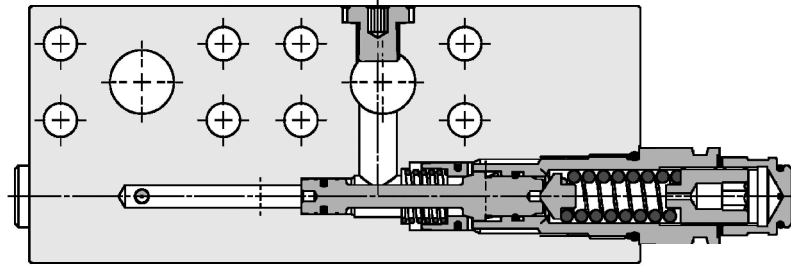
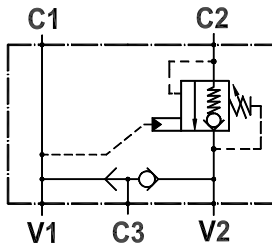




Valvola overcenter singola, flangiabile su motori Rexroth serie "A2FE 45-56-63", con sblocco freno
Single overcenter valve, flangeable on Rexroth motors "A2FE 45-56-63" series, brake release port

Rev.03-2022/08

**SPECIFICHE TECNICHE**

Materiali: cartucce in acciaio zincato, parti interne in acciaio trattato termicamente. Corpo in acciaio zincato.

Portata max.: fino a 150 l/min

Taratura max.: 350 bar

Pressione max.: 350 bar

Rapporto di pilotaggio: 1 : 4 standard, 1 : 8 su richiesta

Regolazione pressione: mediante vite

Campo di regolazione pressione: vedere pag. 02

Peso: 8,000 Kg

TECHNICAL SPECIFICATIONS

Materials: cartridges in steel zinc plated, internal parts in hardened steel. Body is zinc plated steel.

Rated flow: up to 150 l/min

Max. setting: 350 bar

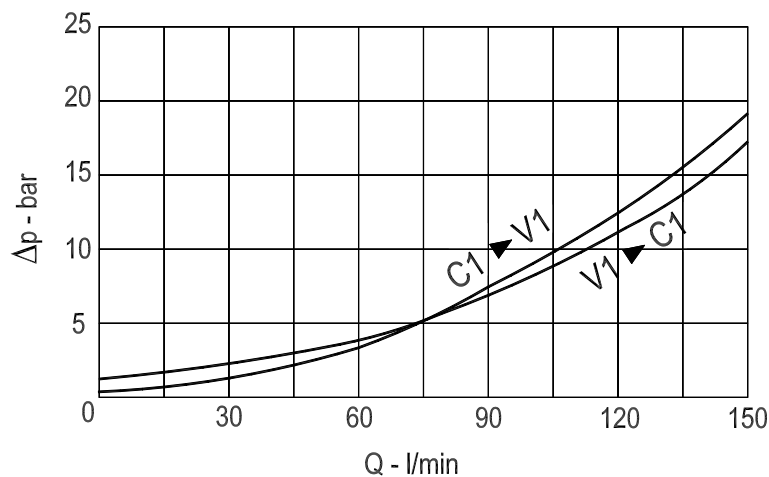
Max. pressure: 350 bar

Pilot ratio: 1 : 4 std, 1 : 8 on request

Adjustment means: leakproof screw adjustment

Adjustable pressure range: see page 02

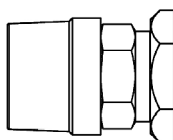
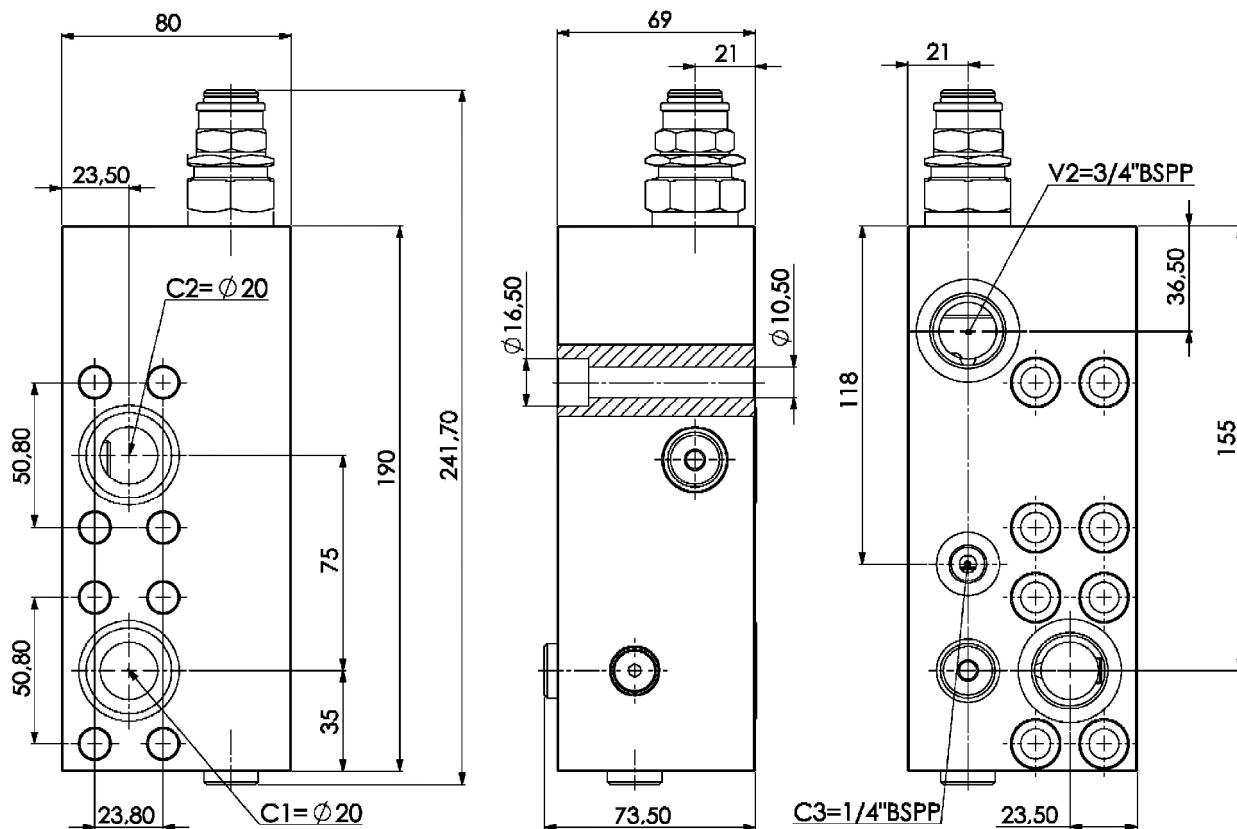
Weight: 8,000 Kg

DIAGRAMMA PERDITE DI CARICO
PRESSURE DROP CURVES



Valvola overcenter singola, flangiabile su motori Rexroth serie "A2FE 45-56-63", con sblocco freno
Single overcenter valve, flangeable on Rexroth motors "A2FE 45-56-63" series, brake release port

Rev.03-2022/08



Cappello antimanomissione.
Codice di ordinazione: 9006800020

Tamperproof cap.
Ordering code: 9006800020

MOLLE - SPRINGS				*
Codice Code	Rapp. pil. Pilot ratio	Campo taratura min.-max. bar Adjustable pressure range bar	Increment. press. bar/giro vite Pressure increase bar/turn	Taratura standard bar Standard setting bar
35	1 : 4	100 - 350	110	280
35	1 : 8	150 - 350	104	280

ESEMPIO DI ORDINAZIONE - ORDERING CODE EXAMPLE

F P O 1 5 0 S F R 1 3 / 4 U S 3 5 B *

Rapporto di pilotaggio . *Pilot ratio*
 * Omettere se standard - *Omit if standard*
 B = 1 : 8

Guarnizioni . *Seals:*
 V=Viton *
 Omettere se BUNA-N
Omit if BUNA-N