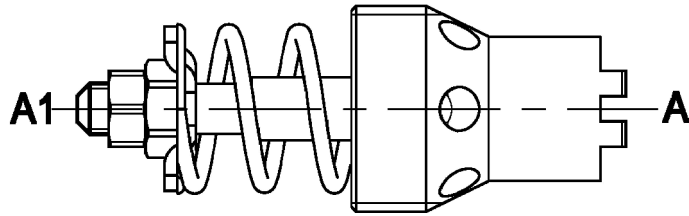
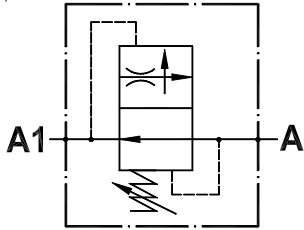




**Valvola controllo discesa compensata regolabile**  
**Adjustable pressure compensated flow restricting valve**

Rev.03-2017/07



**SPECIFICHE TECNICHE**

**Materiali:** tutti i componenti sono in acciaio  
**Portata:** vedere %tabella valori portata controllata+  
**Pressione max.:** 300 bar

**TECHNICAL SPECIFICATIONS**

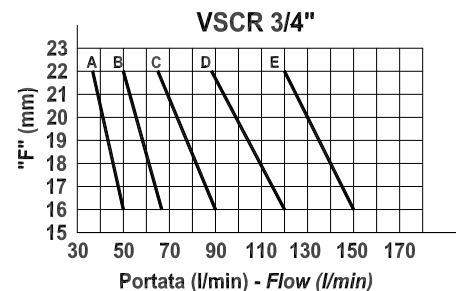
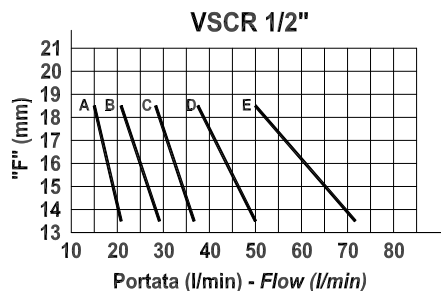
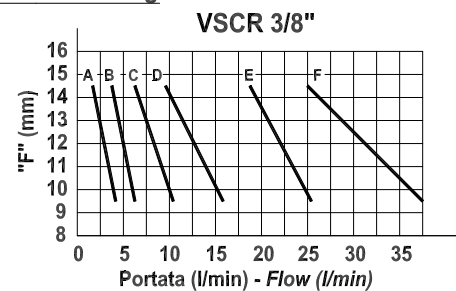
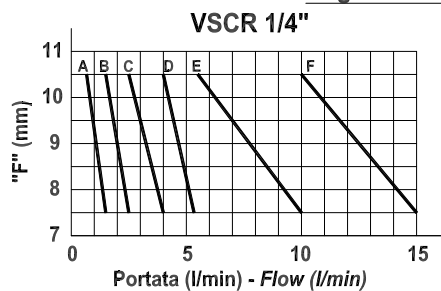
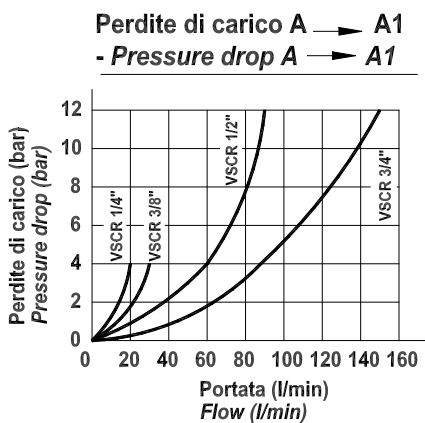
**Materials:** all the components are steel made  
**Rated flow:** see %controlled flow setting list+  
**Max. pressure:** 300 bar

**DIAGRAMMI PERDITE DI CARICO E REGOLAZIONE - REGULATION AND DROP CURVES**

Viscosità olio 24 mm<sup>2</sup>/sec. (3,5 °E)  
 Temperatura 50 °C

Oil viscosity 24 mm<sup>2</sup>/sec. (3,5 °E)  
 Temperature 50 °C

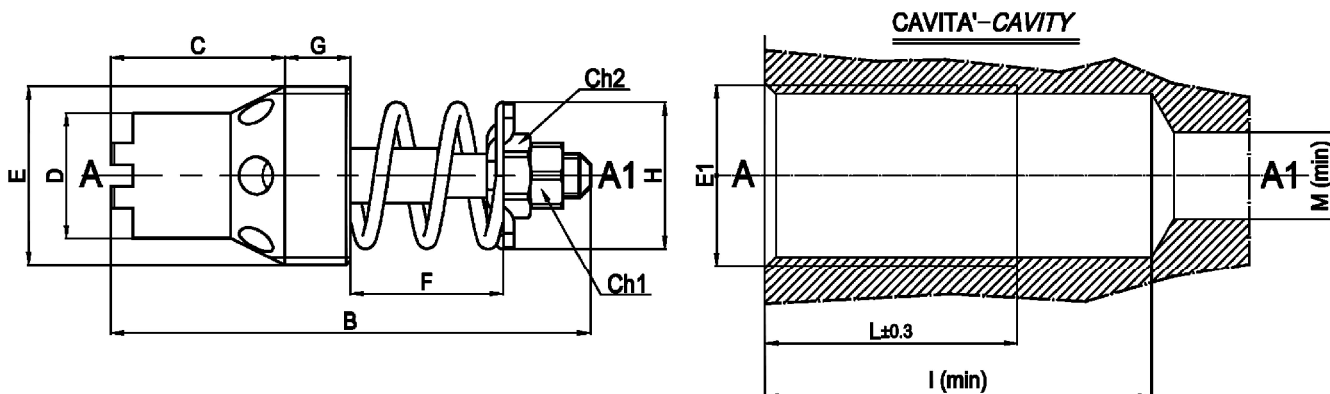
**Regolazione "F" - "F" setting**





**Valvola controllo discesa compensata regolabile**  
**Adjustable pressure compensated flow restricting valve**

Rev.03-2017/07



TIPO TYPE	B mm	C mm	D mm	E BSPP	F mm	G mm	H mm	CH1 mm	CH2 mm	PESO WEIGHT Kg	CAVITA' - CAVITY				COPPIA DI SERRAGGIO INSTALLATION TORQUE Nm
											E1 BSPP	I mm	L mm	M mm	
VSCR-1/4	39	13.5	10	1/4"	Vedi grafici See graphics	6	10	5.5	5.5	0.013	1/4"	53	32	8	6
VSCR-3/8	45	15.5	12.5	3/8"		5	14	6	7	0.024	3/8"	61	35	11	8
VSCR-1/2	51	16	16	1/2"		7	18	6	7	0.037	1/2"	69	40	14	12
VSCR-3/4	62	21	20	3/4"		10	23	6	7	0.070	3/4"	84	51	18	15

Disponibili a richiesta corpi maschio-femmina e femmina-femmina, vedere sezione W100 –  
 Available on request male-female and female-female housing, see section W100

**ESEMPIO DI ORDINAZIONE - ORDERING CODE EXAMPLE**

**V S C R**    **3 / 8**    **A**    **\***

- 1/4 . 1/4" BSPP
  - 3/8 . 3/8" BSPP
  - \* 1/2 . 1/2" BSPP
  - 3/4 . 3/4" BSPP
- Conessioni - Port sizes

Regolazione % $\pm$ (mm)  
 % $\pm$ regulation (mm) \*  
 Esempio . example: F10

Tabella valori di portata controllata . *Controlled flow setting list*

		A	B	C	D	E	F	
VSCR-1/4	Q (L/min)	1 . 1.6	1.5 . 2.5	2.4 . 4	3.9 . 6.3	6.2 . 10	9.5 . 15	*
VSCR-3/8	Q (L/min)	2.5 . 4	3.8 . 6.3	6.1 . 10	9.8 . 16	15.8 . 25	24.5 - 35	
VSCR-1/2	Q (L/min)	16 . 21	20.5 . 28	27.5 . 37	36.5 . 50	48 . 65	-	
VSCR-3/4	Q (L/min)	37 . 50	48 . 65	63 . 90	88 . 120	115 . 150	-	