



Tipo / Type

VSC-G-*.*

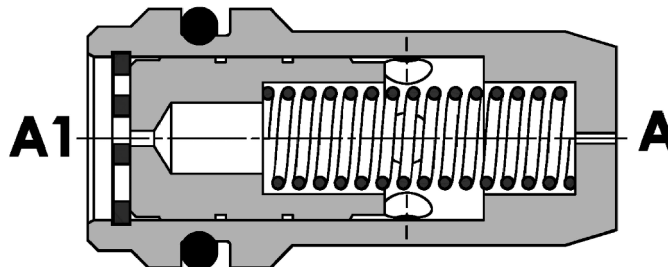
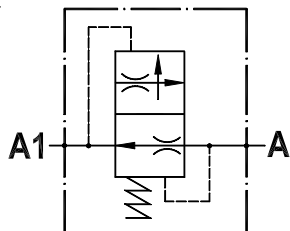
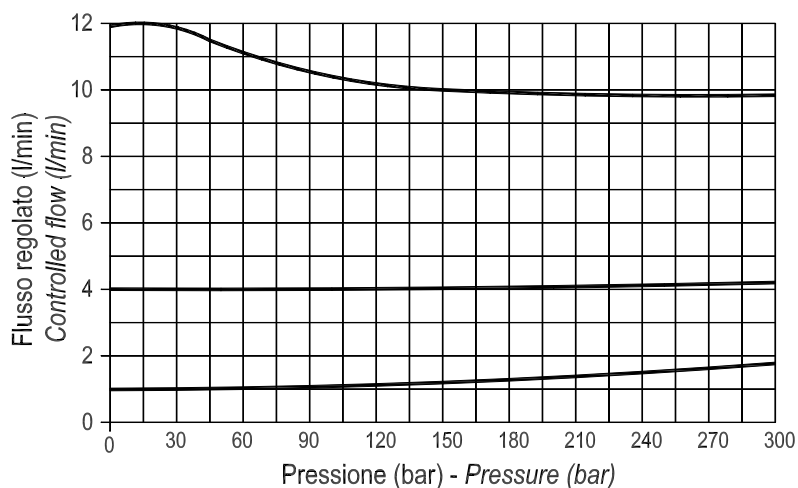
Sez./Section

M

Pag./Page

485/1**Valvola controllo discesa compensata**
Pressure compensated flow restricting valve

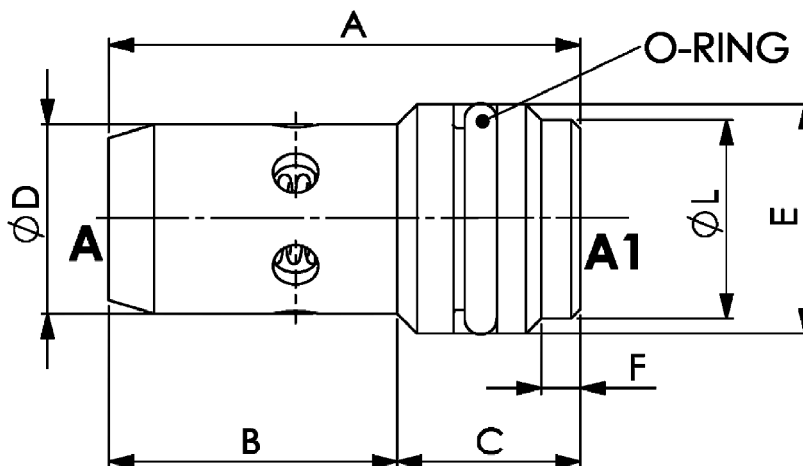
Rev.03-2019/07

**SPECIFICHE TECNICHE****Materiali:** tutti i componenti sono in acciaio**Portata:** vedere %tabella valori portata controllata+**Pressione max.:** 250 bar**TECHNICAL SPECIFICATIONS****Materials:** all the components are steel made**Rated flow:** see %controlled flow setting list+**Max. pressure:** 250 bar**DIAGRAMMA PERDITE DI CARICO**
PRESSURE DROP CURVES



Valvola controllo discesa compensata
Pressure compensated flow restricting valve

Rev.03-2019/07



CAVITÀ Ø12,7H7

CAVITY Ø12,7H7

TIPO TYPE	A	B	C	D	E	F	O-RING	L	PESO WEIGHT	H	I	M
	mm	mm	mm	mm	mm	mm	mm	mm	Kg	mm	mm	mm
VSC G 1/4"	26	15.9	10.1	10.5	12.7	2.15	1.78X9.25	11	0.013	38	9	12.7

ESEMPIO DI ORDINAZIONE - ORDERING CODE EXAMPLE

V S C **G** **1 / 4** **1 0**

Tabella valori di portata controllata . *Controlled flow setting list*

Q (L/min)	1.5	2	3	4	5	6	7	8	9	10

*