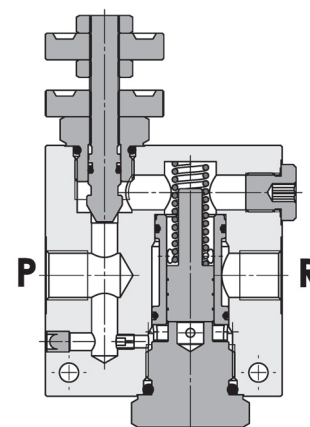
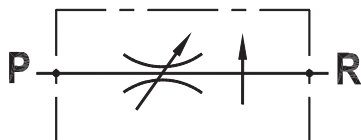


**Regolatore di flusso a 2 vie compensato, in linea**  
**In line pressure compensated two-way flow regulator**

Rev.02-2010/05



**SPECIFICHE TECNICHE**

**Materiali:** corpo in alluminio (standard), a richiesta in acciaio.  
 Componenti interni in acciaio trattato termicamente.

**Portata max.:** - 30 l/min per 3/8";  
 - 50 l/min per 1/2";  
 - 90 l/min per 3/4"

**Pressione max.:** 250 bar (std), 350 bar (S)

**TECHNICAL SPECIFICATIONS**

**Materials:** aluminium body (std), steel body on request. Internal parts are in hardened steel.

**Rated flow:** - 30 l/min for 3/8";  
 - 50 l/min for 1/2";  
 - 90 l/min for 3/4"

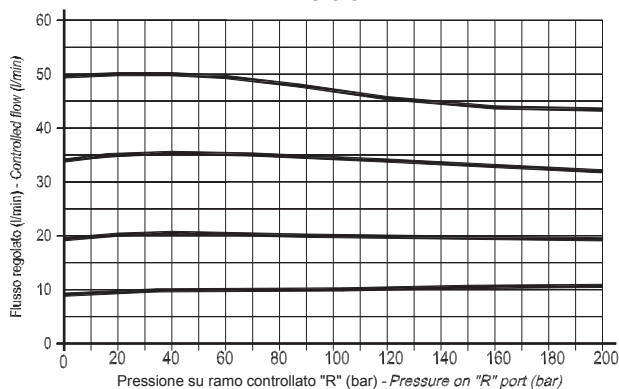
**Max. pressure:** 250 bar (std), 350 bar (S)

**DIAGRAMMA COMPENSAZIONE - COMPENSATION CURVES**

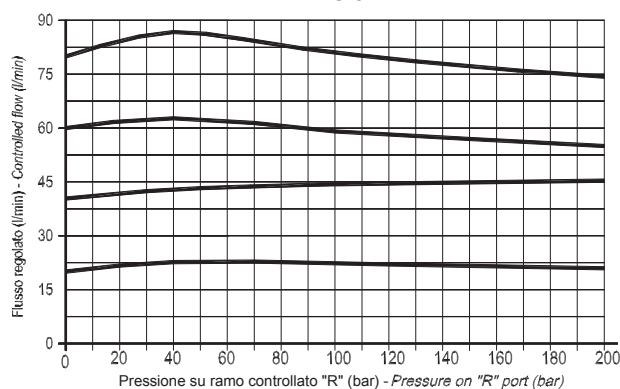
Viscosità olio 24 mm<sup>2</sup>/sec. (3,5 °E)  
 Temperatura 50 °C

Oil viscosity 24 mm<sup>2</sup>/sec. (3,5 °E)  
 Temperature 50 °C

FPRBC 3/8" - 1/2"

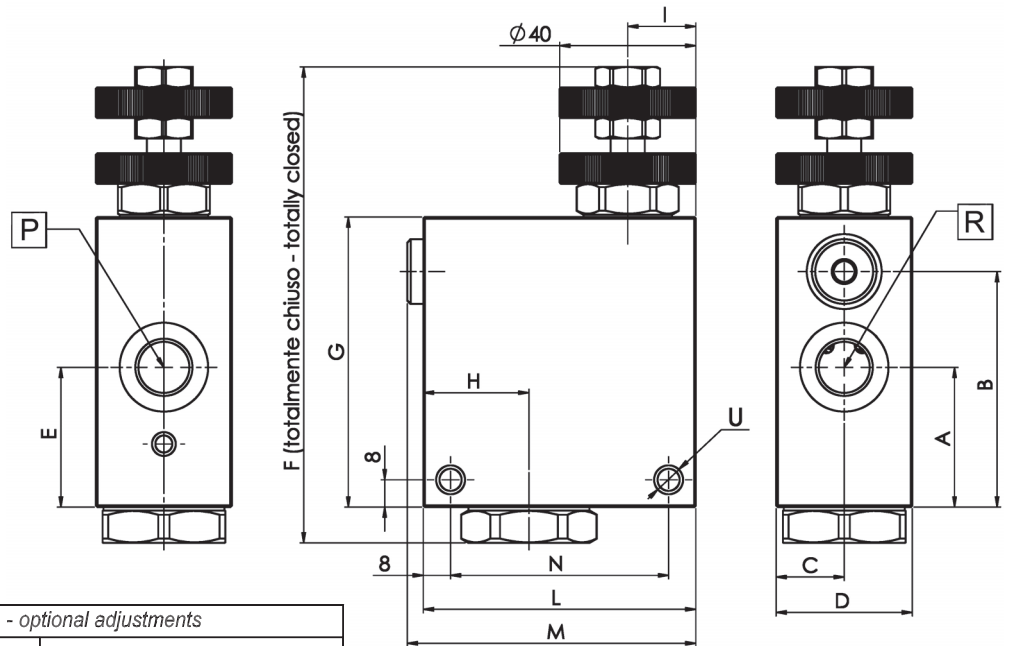


FPRBC 3/4"

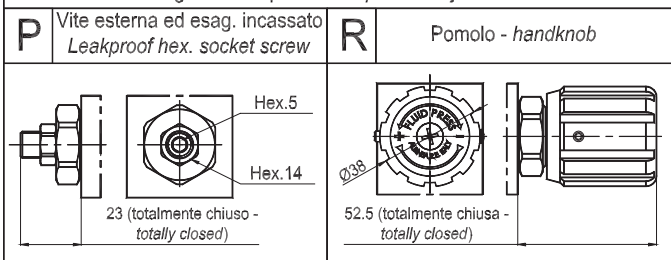


**Regolatore di flusso a 2 vie compensato, in linea**  
**In line pressure compensated two-way flow regulator**

Rev.02-2010/05



Regolazioni opzionali - optional adjustments



TIPO TYPE	PORTATA MAX. MAX. FLOW	A	B	C	D	E	F	G	H	I	L	M	N	P	R	U	PESO WEIGHT
	L/M/N	mm	mm	mm	mm	mm	mm	mm	mm	mm	mm	mm	mm	BSPP	BSPP	mm	Kg
FPRBC-3/8	Vedere specifiche See specifications	41	69	20	40	41	139.5	85	31	20	80	85	64	3/8"	3/8"	6.5	0.900 - 1.950(S)
FPRBC-1/2		41	69	20	40	41	139.5	85	31	20	80	85	64	1/2"	1/2"	6.5	0.900 - 1.950(S)
FPRBC-3/4		44	80	25	50	44	154.5	100	35	30	100	105	82	3/4"	3/4"	8.5	1.580 - 3.550(S)

**ESEMPIO DI ORDINAZIONE - ORDERING CODE EXAMPLE**

**F P R B C    3 / 8    S    G    \***

<p>3/8 - 3/8" BSPP          * 1/2 - 1/2" BSPP          3/4 - 3/4" BSPP          Connessioni - Port sizes</p> <p>* Mat. corpo: omettere se alluminio, S=acciaio          Body material: omit if aluminium, S=steel</p>	<p>Guarnizioni - Seals:          V=Viton *          Omettere se BUNA-N - Omit if BUNA-N</p> <p>G: ghiera - ring          P: vite con esag. incassato - leakproof hex. socket screw *          R: pomolo - handknob          Regolazioni - Adjustments</p>
---	---