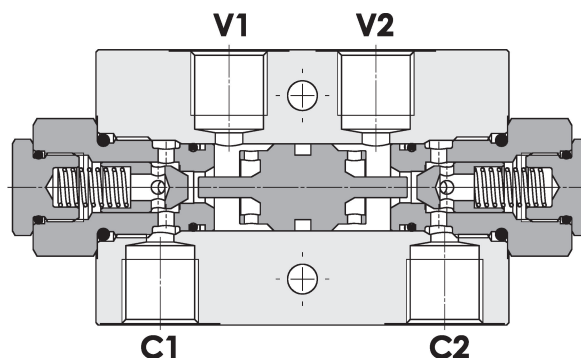
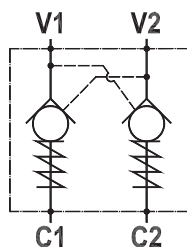


**Valvola di blocco pilotata doppia, montaggio in linea**  
**Double pilot operated check valve, line mounted**

Rev.01-2010/02



**SPECIFICHE TECNICHE**

**Materiali:** corpo in alluminio, a richiesta in acciaio. I componenti interni sono in acciaio trattato termicamente e rettificati.

**Portata max.:** fino a 85 l/min

**Pressione max.:** vedere tabella pag. 02

**Pressione di apertura:** standard 2.5 bar, a richiesta 5-10 bar

**TECHNICAL SPECIFICATIONS**

**Materials:** std body is in aluminium, steel body on request. Internal parts are in hardened and ground steel.

**Rated flow:** up to 85 l/min

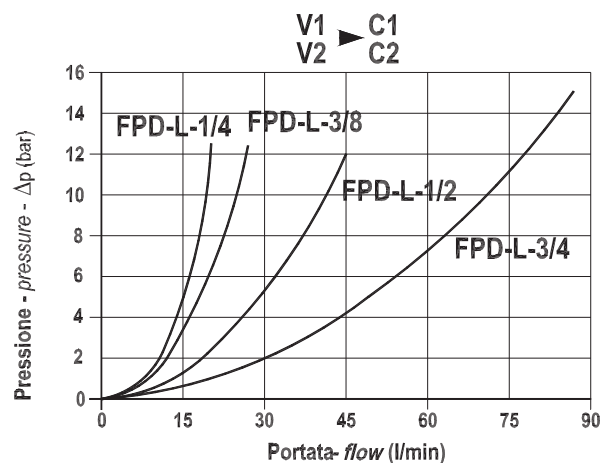
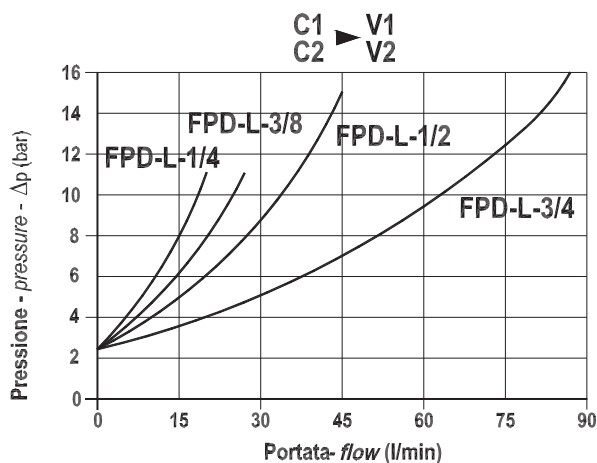
**Max. pressure:** see data sheet page 02

**Cracking pressure:** 2.5 bar standard, 5-10 bar on request

**DIAGRAMMA PERDITE DI CARICO - PRESSURE DROP CURVES**

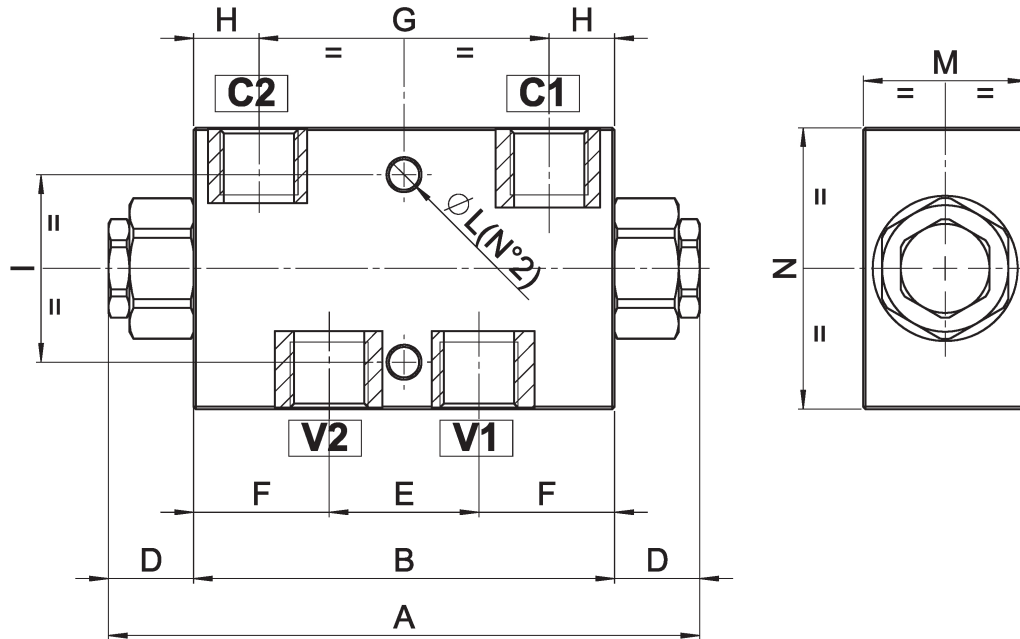
Viscosità olio 24 mm<sup>2</sup>/sec. (3,5 °E)  
 Temperatura 50 °C

Oil viscosity 24 mm<sup>2</sup>/sec. (3,5 °E)  
 Temperature 50 °C



**Valvola di blocco pilotata doppia, montaggio in linea**  
**Double pilot operated check valve, line mounted**

Rev.01-2010/02



TIPO TYPE	PORTATA MAX. FLOW	PRESS. MAX. MAX PRESSURE	V1-C1 V2-C2	A	B	D	E	F	G	H	I	L	M	N	RAPP. DI PILOTAGGIO PILOT RATIO	PESO WEIGHT
	L/MIN	BAR	BSPP	mm	mm	mm	mm	mm	mm	mm	mm	mm	mm	mm		Kg
FPD L 1/4	20	250 – 350(S)	1/4"	126	90	18	34	25.5	60	12.5	40	8.5	30	60	1 : 4	0.625 – 1.300(S)
FPD L 3/8	25	250 – 350(S)	3/8"	127	90	18.5	32	29	62	14	40	6.5	35	60	1 : 7 1 : 4(B)	0.650 – 1.400(S)
FPD L 1/2	45	250 – 350(S)	1/2"	138	110	14.5	34	38	68	21	40	8.5	35	70	1 : 3.5	0.750 – 1.800(S)
FPD L 3/4	85	250 – 350(S)	3/4"	193	165	14	50	57.5	107	29	60	8.5	50	90	1 : 4	2.300 – 5.200(S)

Queste valvole, data la loro configurazione, non consentono una elevata contropressione allo scarico  
 These valves, owing to their configuration, can't allow for a high discharge counterpressure

**ESEMPIO DI ORDINAZIONE - ORDERING CODE EXAMPLE**

**F P D L 1 / 2 2 , 5 G B \* \***

<p>1/4 – 1/4" BSPP                  3/8 – 3/8" BSPP                  * 1/2 – 1/2" BSPP                  3/4 – 3/4" BSPP                  Connessioni - Port sizes</p> <p>2.5 bar (std) – 5 bar – 10 bar                  * Pressione apertura ritengo, omettere se std                  Cracking pressure, omit if std</p> <p>* Guarnizione sul pilota, omettere se non richiesta                  With o-ring on pilot valve, omit if not requested</p>	<p>Guarnizioni – Seals:                  V=Viton *                  Omettere se BUNA-N – Omit if BUNA-N</p> <p>Mat. corpo: omettere se alluminio, S=acciaio *                  Body material: omit if aluminium, S=steel</p> <p>B - solo per FPD L 3/8 R.PIL: 1:4                  B – only for FPD L 3/8 R.PIL: 1:4 *                  Omettere se std - omit if std</p>
--	---