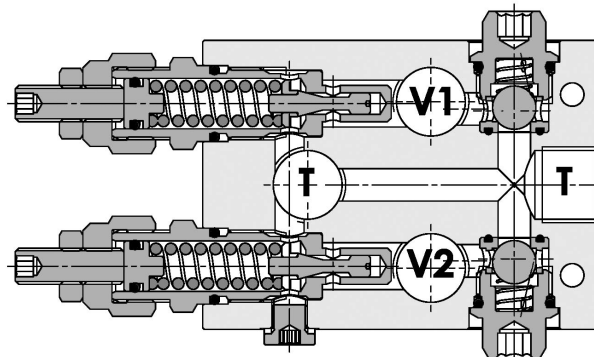
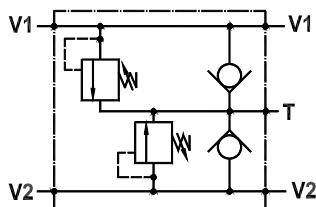


**Valvole di regolazione pressione doppie incrociate ad azione diretta, anticavitazione**  
**Dual cross direct acting relief valves line mounted version, anti-cavitation**

Rev.01-2010/02



**SPECIFICHE TECNICHE**

**Materiali:** cartucce in acciaio zincato, parti interne in acciaio trattato termicamente. Corpo in lega di alluminio.

**Portata:** 40 l/min

**Pressione max.:** 250 bar

**Regolazione pressione:** mediante vite

**Peso:** 1,050 Kg

**TECHNICAL SPECIFICATIONS**

**Materials:** cartridge in steel zinc plated, internal parts are in hardened steel. Body is in high strength aluminium alloy.

**Rated flow:** 40 l/min

**Max. pressure:** 250 bar

**Adjustment means:** leakproof screw

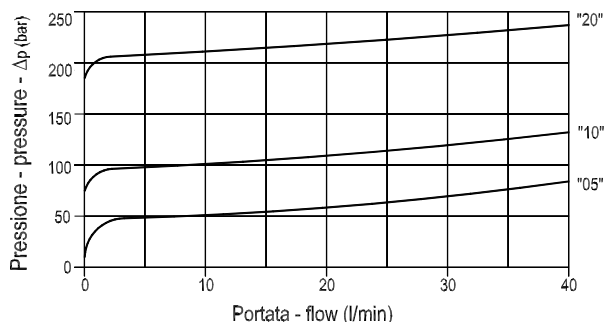
**Weight:** 1,050 Kg

**DIAGRAMMA PERDITE DI CARICO - PRESSURE DROP CURVES**

Viscosità olio 24 mm<sup>2</sup>/sec. (3,5 °E)  
 Temperatura 50 °C

Oil viscosity 24 mm<sup>2</sup>/sec. (3,5 °E)  
 Temperature 50 °C

V2 ⇒ T



T ⇒ V2

